

# DT52EN

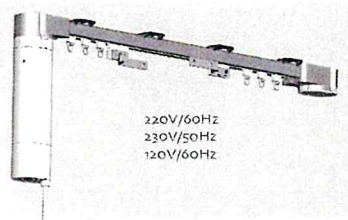
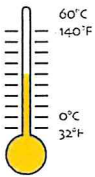
## AC Curtain Motor Specification

Version NO. : A/00

### T Product characteristics

Technical support

Pls read the instruction before assembly.

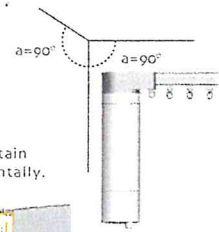
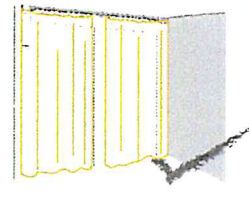
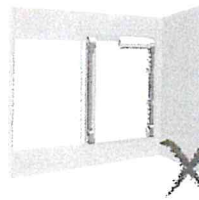


### T Notes

Technical support

Don't use the motorized curtain system vertically or unflatly.

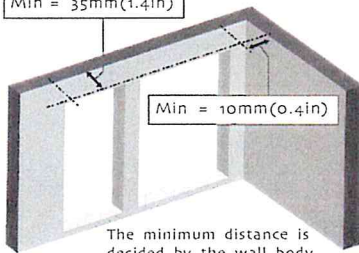
Assembly the motorized curtain system horizontally.



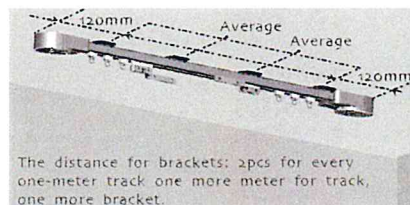
### T Assembly dimension

Technical support

Min = 35mm(1.4in)



The minimum distance is decided by the wall body.



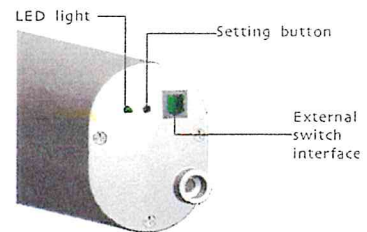
The distance for brackets: 2pcs for every one-meter track, one more meter for track, one more bracket.

Bracket is required for the engraving track point.



### T Inspection for motor buttons

Technical support



### T Motor function

Technical support



Press the set button on the motor for 10 seconds, the indicator will flash for 7 times, then the motor will delete all data, restore factory settings. Then you can match the code and set the limit again.

Electronic /

Electronic limit + Resistance and stop function + Limit memorized after power off + external switch control + Can adjust the limit point manually + Touch-start

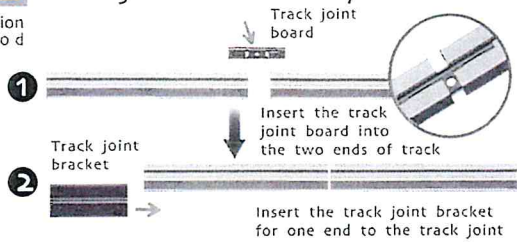


DT52EN

# M

Installation method

## The joint assembly of track



Note: ■ The track needs to be engraved when the length is less the required  
■ The track needs to be engraved when inconvenient to transport

S track

The following steps pls refer to "the assembly of rubber belt and track"

# M

Installation method

## The assembly of rubber belt for curtain motor

1 The confirmation of profiled material dimension

The length of profiled material = The total length of track - 14.8cm

e.g.

For example: the total length of track is 2 m

The length of profiled material: 200cm-14.8cm=185.2cm

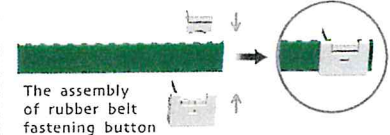
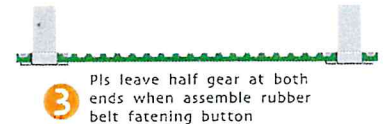
2 The confirmation of rubber belt dimension

S track The length of rubber belt = (The total length of track X 2) - 4.5cm

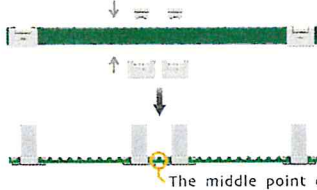
A track The length of rubber belt = (The total length of track X 2) - 5.5cm

The length of rubber belt (S track): (200cm X 2)-4.5cm=395.5cm

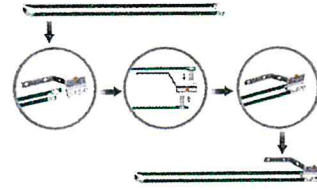
Note: pls cut through the middle of gear apex



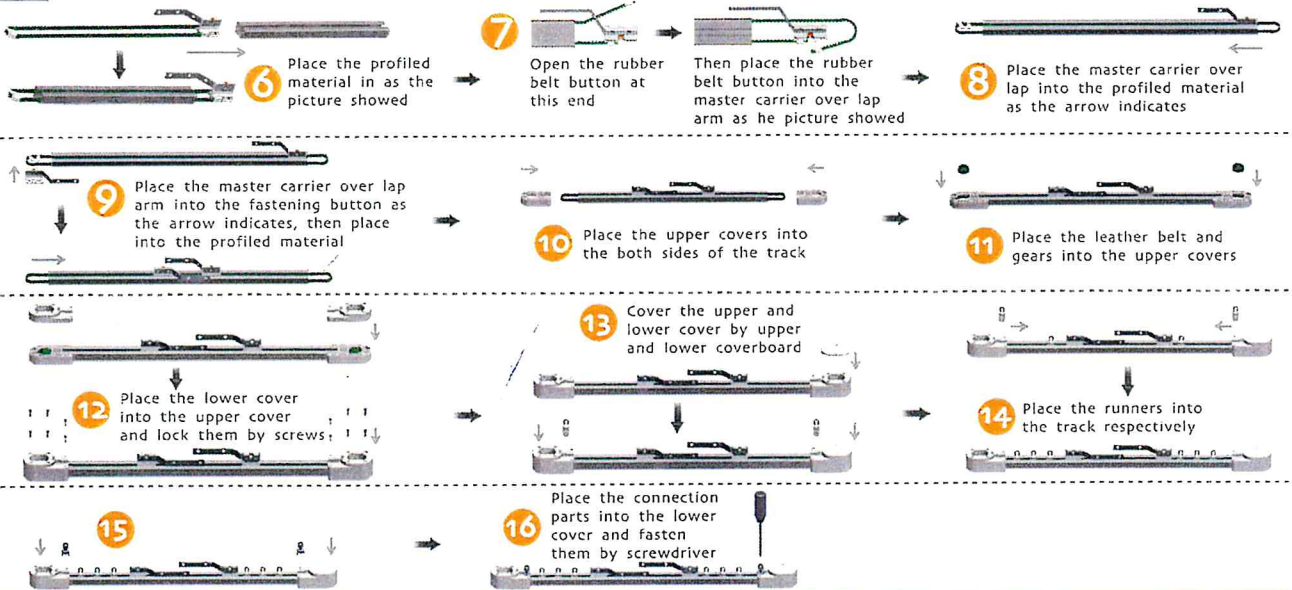
4 Pls leave one gear at middle of two rubber belt fastening button when assemble rubber belt fastening button at the middle point of rubber belt



5 Fold the rubber belt and assemble the rubber belt fastening button into the master carrier over lap arm



! pls confirm which one you bought, the old type or the new type? The following installation for hook is for the new type, if you buy the old type, pls assemble the hooks after finishing the step 9



# M

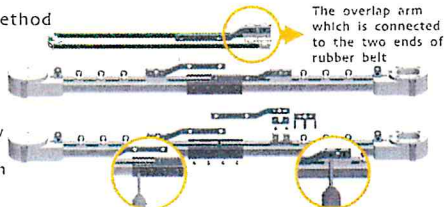
Installation method

## Folding method for joint track (for easy transit)

Track folding method

1 Search for the slip part connected with the ends of the rubber belt

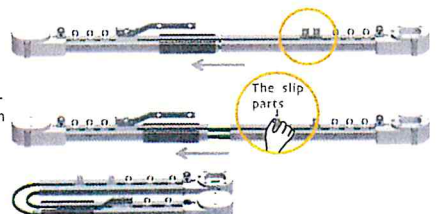
2 Take off the screw of the slip parts and the connection bracket



3 Push the connection parts to one side

4 Pull the slip parts slightly and separate the connection part at the same time

5 Fold the track





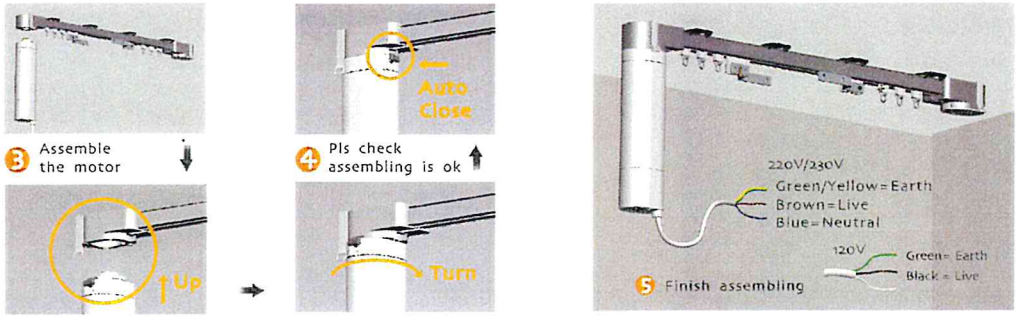
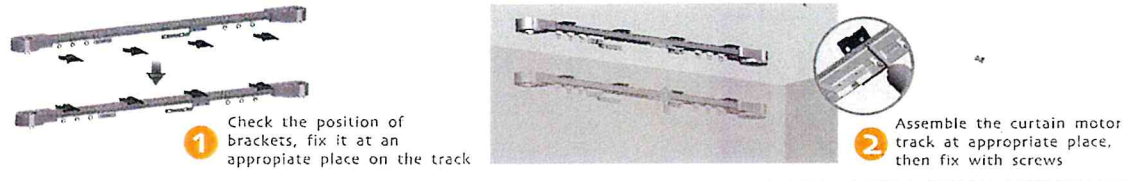
Restoring the track

- 1 Unfold the folded track
- 2 Combine the track slowly
- 3 Push the connection bracket to the connection part
- 4 Screw the connection bracket and install the slip parts
- 5 The track is successfully assembled

M

The installation for curtain motor and cable

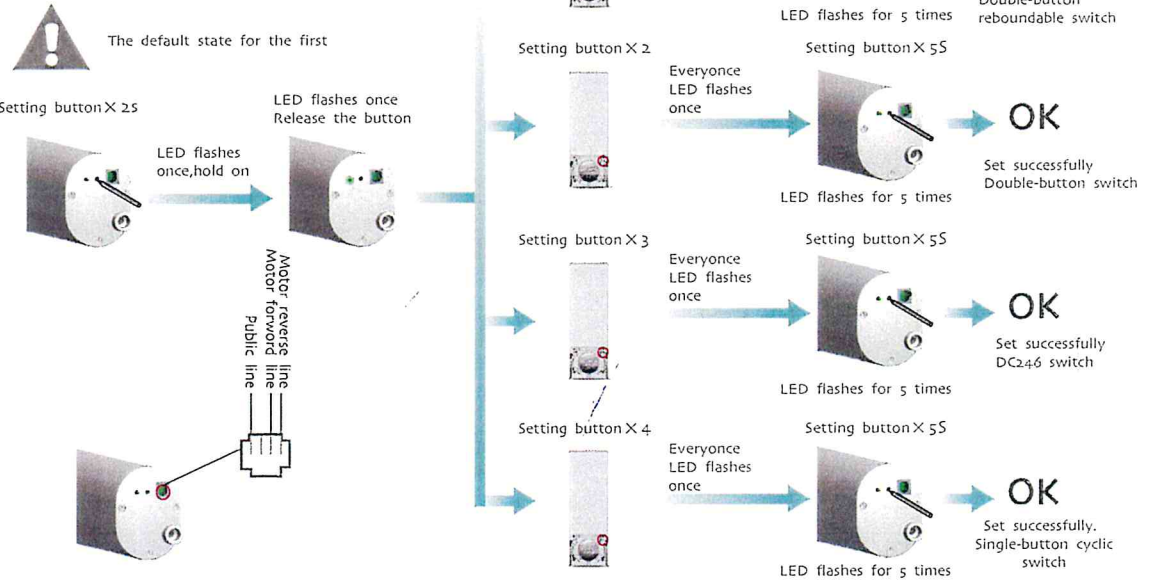
Installation method



M

External switch selection

Installation method



C

Common emitters for curtain motor

Control system

